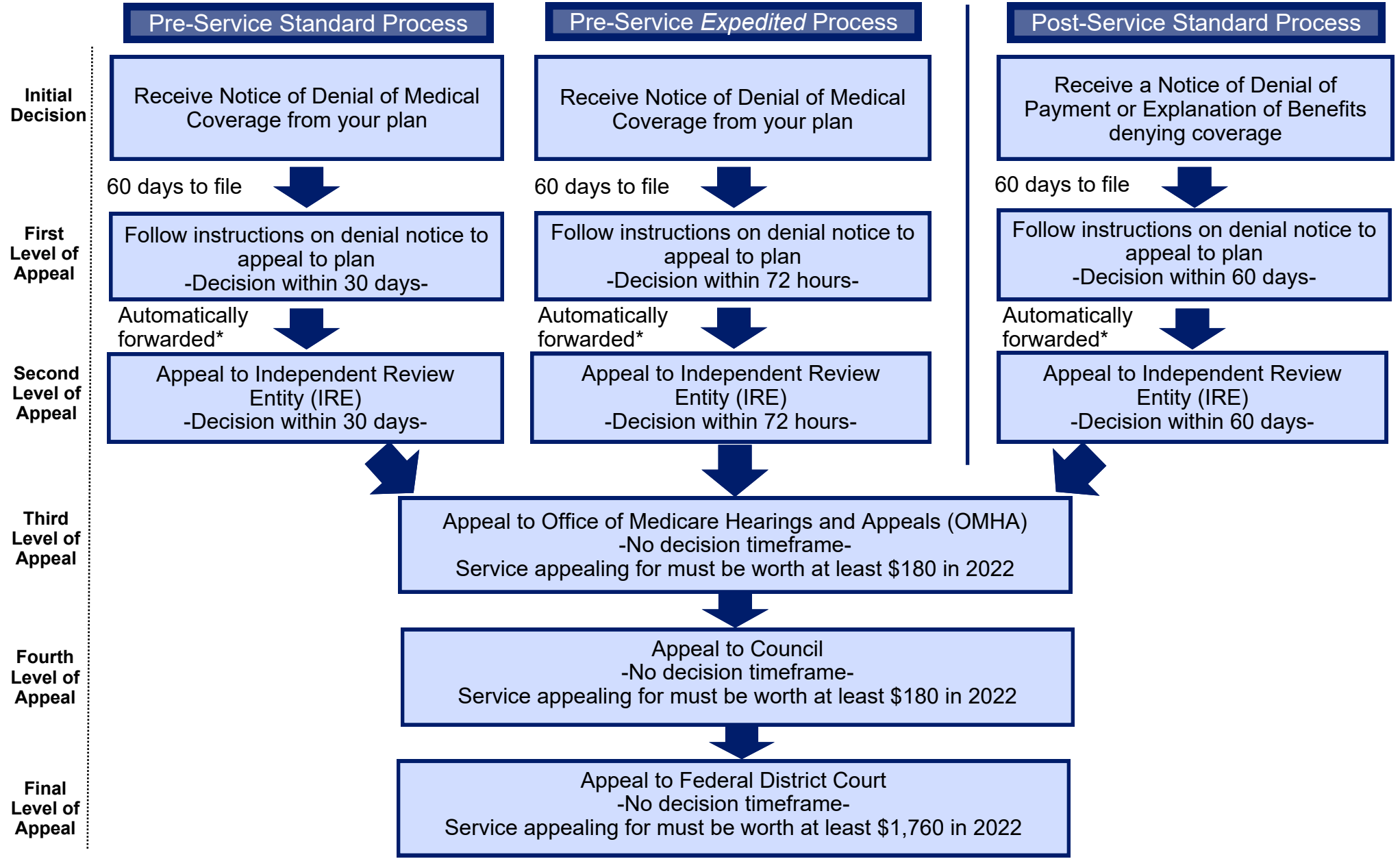


# Medicare Advantage Health Appeals



\*Appeal automatically forwarded to IRE upon denial of appeal to plan or if plan exceeds decision timeframe

**Note:** This appeal process is for when you are appealing a Medicare Advantage health service or item. Click [here](#) to learn more about this process. Keep in mind that there are different processes for Original Medicare and Part D prescription drug appeals.